



2026 February Newsletter



The Annual Family Day Winter Bike Ride at Guelph Lake

Join your fellow club members and celebrate the magic that is winter riding at Guelph Lake this coming Family Day. Mark your calendars and get ready for a day full of fun, community and wonderment riding the winter trails!

Date: Monday, February 16, 2026

Time: 10:00 AM – 2:00 PM

Location: Guelph Lake Trail Head by the [Kiosk Map](#) at Farmstead Junction

Group rides for all skill levels.

There will be hot dogs and hot chocolate to keep you fueled and warm.

This GORBA group ride is weather dependent. In the event of inclement weather or poor conditions, we will reschedule.

For trail conditions, check out our Instagram @gltrailsgorba or scan the QR code further below. No Instagram? No problem! Click [here](#) to see them at GORBA.ca

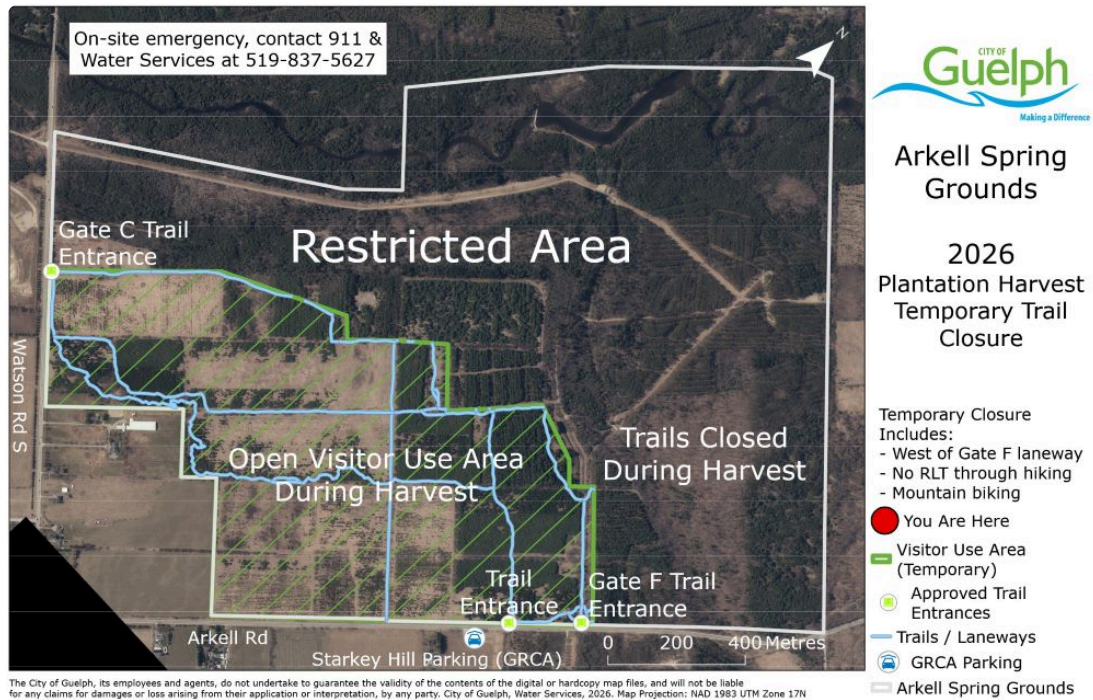
Let's come together to celebrate our incredible community and the amazing trails our dedicated volunteers work so hard to curate for everyone's enjoyment. We can't wait to see you there!

Get the **CYQL app** and receive notices and stay up-to-date with our organized

rides like this one. More details below.

Sign up on CYQL

Arkell Logging Underway



The Red Pine Plantations in the northeast section of the Arkell Spring Grounds are being thinned. Work has begun and is expected to take three to four weeks.

Property Access During Pine Thinning

For the safety of visitors, trails east of the Gate F laneway off Arkell Road will be closed for the duration of the thinning. Property access will remain available between Gate C on Watson Road South and Gate F. When visiting the property, please respect all posted signs. Only a portion of the Radial Line Trail will remain open. Signs will be posted on site notifying visitors of closures where applicable. More information, including a map of the property highlighting the accessible regions during the pine thinning, is available on [City of Guelph website](#). **GORBA will be requesting extra help from the membership early this season to clear and rehabilitate any trail damage caused from the logging. Many hands make light work.**

2026 Memberships now available!

Your membership fees are critical to keeping the trails open and maintained. Memberships are for the calendar year from January 1 to December 31. Less than the price of a bike tire, same as last year, \$40 cheap! No tariffs, ever!

2026 Membership

Winter Loops



The **2025/2026 Winter Loops** are up and running at Guelph Lake!
Sponsored by long-time friend of GORBA and the trails, [Von Dehn Homes!](#)

Quick Tips:

- All loops start and finish at [Farmstead Junction](#).
- The Loops are one way, please ride them in the signed direction only.
- TrailForks Routes can be found at the links below.
- Don't ride if it's warm enough to leave ruts in slushy snow or bare ground.
- For trail conditions on Instagram @gltrailsgorba, scan the QR code below
- No Instagram? No problem! Click [here](#) to see them at GORBA.ca
- Only the Loops will be groomed.
- All other Guelph Lake trails will be open to ride as conditions permit.
- Get outside and ride your bike in beautiful surroundings and have fun with your friends along the way!
- New to winter riding? Chat with our local shops, they'll be glad to get you set up!
- Got snow shoes? Come tramp the trails after a snow fall.

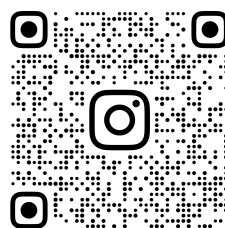
TrailForks Winter Loops Route maps

[Short](#) – 4 km

[Medium](#) – 7 km

[Long](#) – 10 km

Check the Conditions before you ride!



GLTRAILSGORBA

GORBA Trail Conditions

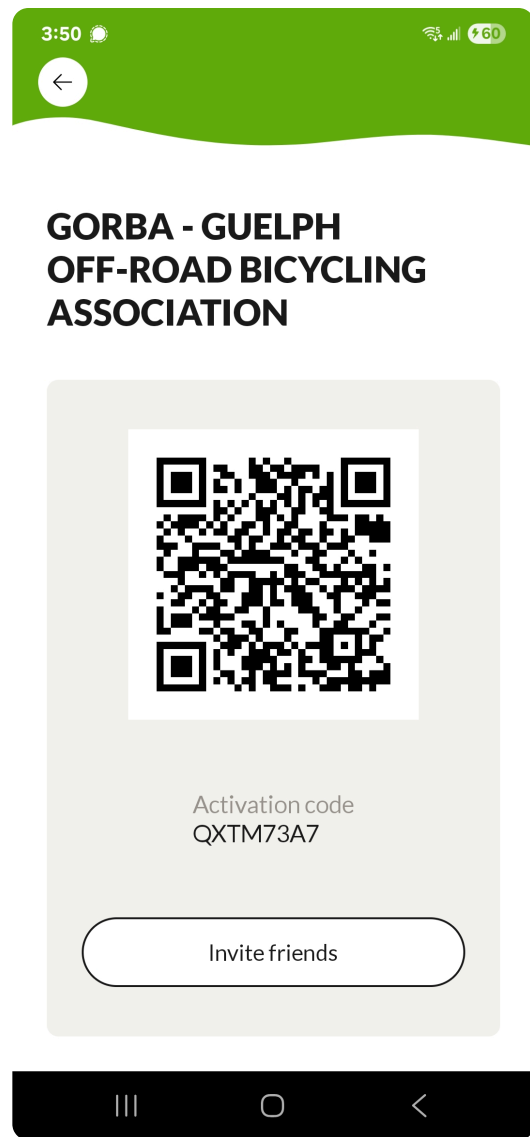
CYQL Group Ride App

GORBA is now using the CYQL app for its group rides. It is a cycling specific phone & desktop app that keeps you notified, informed and updated of group rides including cancellations.

As of Jan 1, 2026 the CYQL app is being used to sign up for all GORBA Group Rides.

You sign up for rides and pick the speed group. Ride leaders get a count of people coming and you get to see who is riding in which group.

Download and install the CYQL app on your iOS or Android phone by scanning the QR code or click the button below for desktop. Sign up today!



[Get the CYQL App](#)

Junction Kiosk Updates



Perhaps you have noticed our old map kiosks are being replaced with an updated and more robust version. These are being made possible with the generosity of sponsors. If you would like to sponsor a Junction Kiosk please click the button below to contact our sponsorship director.

[Email for more info re Junction Kiosk Sponsorship](#)

2026 Sponsorship Opportunities

Businesses are encouraged to become involved through a direct arrangement with the club. There are options to fit every budget. For more information contact our sponsorship director by clicking the button below.

[Sponsorship Opportunities](#)

Take Your Bike to a Local Shop

This is the time of year to take your bike in to your local shop for repairs and a tune-up. Avoid the Spring rush and wait times, do it now! There are often discounts for club members too, tell them we sent you. All the bike shops in Guelph, Arkell & Elora support GORBA. We need to support them back. Let's keep this community vibrant!

Remember, never stop pedaling.
Otherwise, you'll fall over - *Einstein (more or less)*

That's it for now, see you on the trails!

These trails don't build or maintain themselves.



Supporting the trails is the cheapest & most important part of MTB.

[\\$40 GORBA Membership](#)

[Donate to the Trails](#)

42 Carden St, N1H 3A2, Guelph

This email was sent to {{ contact.EMAIL }}

You've received this email because you have been a member at one time or another.

[Unsubscribe](#)

